



MAPLE "A" NEWS

Newsletter of the Green Mountain Chapter/Region of M.A.F.C.A. and M.A.R.C. Inc.

1968 Our Forty Second Year 2010

Volume 38, Issue #2 March / April, 2010



SPEAK - IN A SPOKES

We have our spring like weather in front of us! It sure has been a fast winter. Where did it go?

My good friend Fred Webster is now building a snow roller! Now here's a guy we could all learn a lesson from. I do admire his thinking, he never complains, gives compliments, and is always interested in the person he's chatting with. In the last two years he has built and completed two stage coaches, here I'm still restoring my pick-up that I bought in 2000! He makes me think of a lot of our club members that will take on anything at any age. A ton of people visit his "Farm museum" each year and he never gets tired of it. I want to try too be like him with his positive thinking "Life is good" and "Oh it's just water off a ducks back" saying. "I have ducks on my pond... not much bothers them... they don't quack unless they have a good reason."

I love everybody. Let's hope for good health and fun for us all in the coming Model "A" meets and tours.

Sincerely,
Your elected president Douglas Leithead



PLEASE NOTE

Please send your current email address to Richard Phinney. We have many old Email addresses on file that are dead. Please forward to Richard Phinney modelanut@comcast.net.

PLEASE NOTE

Until further notice all dues, change of address and request for Rosters should be sent to Treasurer Richard Phinney. His address is on the last page of this Newsletter.

We are still looking for a qualified candidate for the Secretary's office. If you are interested please contact one of the Club's officers.

Editor



Dues are due now for 2010. If your address label has 2009 your dues were due as of January 1, 2009. From now on please send them to the Treasurer Richard Phinney, 66 Featherbed Lane; South Hero, VT 05486. Dues for 2010, are \$20.00.

The Grapevine

The grapevine is news about our fellow members, Please let us know when your birthdays' and anniversaries are so they can be included. Contact Peter Crosby at 802-878-6376.

Birthdays

March 5

Norman Dube

April 2

Peggy Dube

April 9

Al Lysak

April 13

Vicki Williamson

April 14

Rena Hart

April 21

Ellie Ball

Anniversary

March 20

Stephen & Kathryn Shortsleeves

Chapter Flea Market

If you have something for sale, trade or what ever let me know. 802-878-6376

peter.crosby@myfairpoint.net

Peter Crosby

For Sale: seventeen issues of the Restorer and Model "A" News. Mostly ones with conventions and many, many Model "A" pictures. Special issues on Mail Trucks, technical articles such as headlights, and The Golden Anniversary issue with a few as far back as 1971. All for \$75.00. Larry Johnson, 1129 Lewis Creek Road, Charlotte, VT 05445; 802-425-2092

Treasurer's Report

Dick Phinney

Ending Balance-checking..... \$908.28

Ending Balance-savings..... \$1676.06

Charity Fund\$0.00

3/1/10

2010 Activities

Paul Boozan

June 12-13, 2010 Manchester Car Show, Manchester, VT

If you would like to host a meet this year please let me know so you can be included in our Spring, Summer and Fall activities. My phone number is 802-644-5688.

Check out our website for further information and links for events.

Left: an early 1930's Vermont inspection Sticker.



Model "A" Ford Hubley Models

By Peter Crosby

I was unpacking boxes the other day and came across my Hubley models. My collection consists of an Open Cab Pickup that was given to me by my old friend Ron Williamson, and I also have two un-built still new in the box Roadster and the Station Wagon models.

According to my online research, Hubley Manufacturing Company of Lancaster, PA got its start in 1894 as a maker of electric train equipment until 1909 when they entered the Toy business. The toys were made of cast iron and were often modeled on actual vehicles or machinery. As the auto became a mainstay on American streets, Hubley added simple cast iron autos to their line of toys which also included cap guns and animal figures.

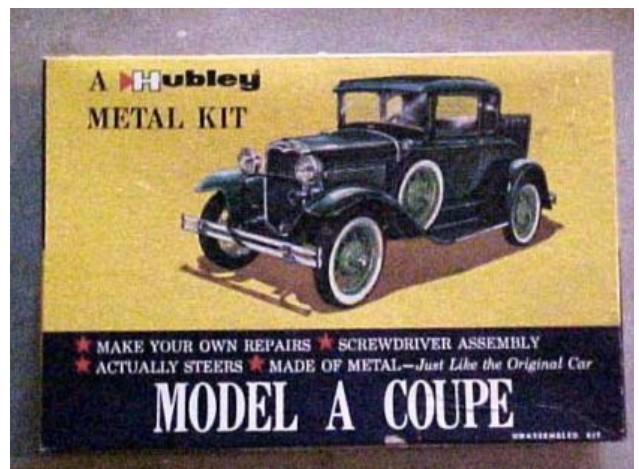
Hubley started producing automobile modeling kits that we are familiar with in 1959. These kits were made of zinc die-casting and plastic. Four original kits made included the Indy Racer #852K, 1932 Ford Custom Roadster #853K, Model "A" Ford Roadster #854K and the Model "A" Ford Pickup Truck #855K. The Indy Racer was discontinued in 1961, never to be reissued, making it a rare kit. The Custom Roadster was discontinued in 1962 and was never reissued. The first issue boxes had compartments for the different parts. In 1963, the Model "A" Roadster was reissued in new packaging with model # 850K-300 and the Model "A" Pickup would be reissued in its new 7 X 10 box with its original model number.

For the production year of 1964, Hubely discontinued issuing their kits under the "K"- (Kit) series numberings and simply placed the numeral "4" in front of the previous 3-digit-K number... and retained the suffix number. Thus, the 8xxK-300 became 48xx-300. Some releases were just 48xx. This numbering system continued until July, of 1965, when Gabriel Industries took over the Hubley operations. During the Gabriel Era, the suffix number was dropped completely and the 48XX-300 became simply model kit number 48XX.

Gabriel Industries continued issuing these fine kits made from the same molds and in the same old Hubley factory, adding a line of Model "T" kits to the mix. In 1980, kit production was halted when Gabriel was sold to CBS Toys. Over a decade later, JLE (ERTL) began making these kits in their Iowa factory until about 2000. They basically used the same molds but with a little retooling to add their name to the parts.

Today, Hubley models are out of production and spare parts can no longer be ordered for them. The body styles were made in the past were; Town Sedan, Roadster, Coupe, Station Wagon, Pickup, Phaeton, Victoria. Un-built or built kits may still be commonly found on eBay with price ranges running from \$15.00 to \$50.00 or more. If bidding on a Hubley Model ask the seller if the kit is complete before bidding. Plastic parts like headlight lenses and windshields are not always included. I'm not sure why these are missing but it seems to be a common question from prospective buyers.

If you ever attend a Model "A" National or Regional Convention you can visit a "Hubley Derby". Convention attendees both adult and kids compete in a race for the best time over an inclined track. There are prizes awarded for the best times in different heats and classes. Check it out sometime.





Highland Park Model "T" Assembly Plant by Peter Crosby

In the last Newsletter I published a photo from my Grandfathers photo album and wondered what Ford Plant this was. A fellow member Rob Boyd indentified the photo, "the photo in the newsletter is the powerhouse of the Highland Park manufacturing and assembly plant of the Ford Motor Co. as it faces Woodward Avenue, the same picture circa 1920 is in the book ROUGE pictured in it's prime - on page 16. Your photo is of a later date as seen by the cars..."

From Ford's Website-

Highland Park Model "T" Assembly Plant was the birthplace of the Moving Assembly Line. A breakthrough came in April 1913. A production engineer in the flywheel magneto assembly area tried a new way to put this component's parts together. The operation was divided into 29 separate steps. Workers placed only one part in the assembly before pushing

the flywheel down the line to the next employee. Previously, it had taken one employee about 20 minutes to assemble a fly-wheel magneto. Divided among 29 men, the job took 13 minutes. It was eventually trimmed to five minutes. This approach was applied gradually to the construction of the engine and other parts.

The First Moving Chassis Assembly Line at Highland Park was first experimented with on October 7, 1913, a rudimentary final assembly line was rigged at the new Highland Park plant. A chassis was pulled slowly across the factory floor by rope and windlass. Parts and 140 assemblers were stationed along the 150-foot line. As the winch dragged the chassis across the floor, workers attached parts to the car. With this new assembly line, production time for a single vehicle fell from 12 hours and 30 minutes to five hours and 50 minutes.

Soon the line was improved with a power-drive "endless" conveyor system that was flush with the floor and wide enough to accommodate the chassis with room for workers on both sides. By 1914, continuous improvement had whittled the time required for assembly to 93 minutes!

The Model "A" Ford was not assembled at the Highland plant. When the Rouge Plant in Dearborn was up and running the Highland Park plant was used for Tractor production.

Below: is one day's Chassis production at the Highland Plant



**GRAND PAW EATS HIS ROOSTER
PART TWO
BY DON POUTRE IRASBURG VT**

Now that you've met Irasburg's finest and some beyond the town lines, It's like Grand Ma always said, "Girl you marry a fool you'll bare fools and believe you me Irasburg had its share" Then she added "but we won't point fingers!" Contradicting herself, she pointed out Poshmull saying he was a workaholic. When I said, "he was? Grand Maw." she responded with, "If you said the word **"work"** he got drunk!"

Now, getting back to the cock fights; it's just eleven o'clock as O-de is saying "Gentlemen, It's the Eleventh hour ... Let the Cock Fights begin"!!! Brother To-Ke steps into the ring and began to read the rules of cock fighting. "All those who have a cock, put your name on a piece of paper and drop the paper into my hat. I will then draw two names and those two roosters will fight each other. It will be a fight to the death or to the point where one or the other can't fight anymore!

If that should be the case ... then we'll just kill him anyway. The only way you can save your cock is to throw your hat in the ring, then, and only then can the fight be stopped. But your rooster can never fight here again. Oh yes, all bets must be placed before the fight starts and one other thing "at the end of the day my brother Lo-Ne has a big surprise for you.

Now the first two cocks to fight are Fat Weed's rooster "SON" and Keg Larue's rooster "FLASH". Well old Fat Weed and Keg Larue stepped into the center ring with their cocks under their arms and started poking their beaks at each other to get them real mad. After each man stepped back to their corner, To-Ke rang the bell and they let their roosters go.

"Flash" hit the ground running and was all over "Son". The little spurs sounded like a sewing machine as he went up and down on "Son". In a minute flat he must have driven those spurs into "Son" a hundred times or more. At this time Grand Paw turned to me and said, "looks like the "Son's" going down!"

Square Deal then threw in his two cents and shouted "hey Fat Weed!! You could stand your rooster upon the lawn, stick a garden hose in his butt and use him as a lawn sprinkler!"

Well Fat Weed couldn't take it anymore so he threw his hat in the ring to save his chicken, then "Flash" was declared the winner.

The next two names drawn were Peach Fuzz Palmer, with his rooster "Pretty Boy" and Poshmull and his rooster "Q-T". When I asked Gran Paw 'What's a Poshmull? Chuckling he turned to me and said "soft bag or soft sack. ha ha ... Hey!.. With a punch in the arm,"stop your giggling or I won't bring you again"!

At this moment the two men let their roosters go. The problem was that "Q-T" kept trying to jump "Pretty Boy" from behind and "Pretty Boy" didn't like that neither did Peach Fuzz Palmer. Old Peach Fuzz hollered out to Poshmull "what the hell's a matter with your cock. Doesn't he know how to fight?" Suddenly, Peach Fuzz got mad and jumped into the ring and grabbed Q-T by the neck, slammed him on the floor and then stepped on his head and killed him!! Then he turned to old Soft Sac and said "Their my roosters the winner!! Is there anything you want to do about it?" Now for those of you who don't know Peach Fuzz was a retired boxer and champion. On top of that, he stood 6 foot 9 with two hundred ninety pounds of muscle! Old Pushmull knew he could end up like his rooster so he just said "o-kee-doe-kee"

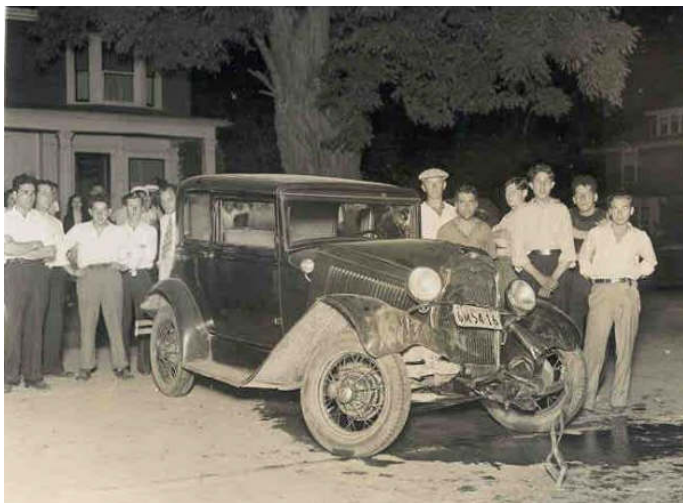
As the day wore on, cocks were dying left and right and as fast as they dropped, Lo-Ne took them out back of the wood shed. Early that morning he had dug a hole filled it with wood and started a fire. Then he put a steel grate on top of the hole and was throwing all the dead cocks on top of the grates ... this would be the brother's only profit in all this other then what they couldn't eat, they brought to the Yum- Yum restaurant in Irasburg and traded for cash to buy apple wine.

To be continued.





Oh! The Horror Period Model "A" Wrecks



Now I know where all my used spare parts
came from!

Pete

Club Officers

President-Douglas Leithead; 1856 Darling Hill Road; Newport, VT 05855 Phone 802-334-2584

Vice President-Paul Boozan 1364 Stebbins Rd.; Jeffersonville, VT 05464; Phone 802-644-5688; pboozan@myfairpoint.net

Treasurer-Dick Phinney; 66 Featherbed Lane; South Hero, VT 05486; Phone 802-372-5230; modelanut@comcast.net

Secretary- Office Open

Region Director-Rod Dolliver; 430 Dolliver Rd.; Charlotte, VT 05445 Phone 802-425-2745; rcdbjd46@aol.com

Newsletter, Webmaster-Peter Crosby; 19 River View Dr; Essex Junction, VT 05452 Phone 802-878-6376; peter.crosby@myfairpoint.net

Chapter Flea Market

- ◆ Send description of items for the Flea Market to Peter Crosby via mail or Email to peter.crosby@myfairpoint.net.
- ◆ Items should be described For Sale, trade, wanted, or take it away.
- ◆ For Sale items must be listed with asking price.
- ◆ Flea market is open to all members free of charge for auto and fashion related items only.

The Green Mountain Chapter / Region M.A.F.C.A. & M.A.R.C. Inc. is a tax exempt organization under the 501 (c) (7) of the Internal Revenue Code. Federal Employer Identification Number: 30-0357749



MAPLE "A" NEWS

Green Mountain Region / Chapter
MARC / MAFCA Inc.
Peter Crosby, Editor
19 River View Drive
Essex Junction, VT 05452