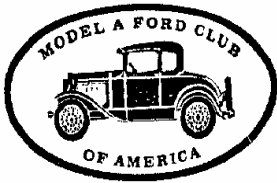


# MAPLE "A" NEWS

Newsletter of the Green Mountain Chapter/Region of M.A.F.C.A. and M.A.R.C. Inc.



**1968 Our Thirty-Eighth Year 2006**

Volume 34, Issue #4 July/August, 2006



## SPINNING MY WHEELS

By Paul Boozan, President



Rain, Rain, Rain!! June was a wash out. Never did get to go to Shelburne or Hilldene. The weather finally broke and we had a great meet at Bruce and Debbie Bushey's. There were about 20 hardy soles that made the trip up to Lake Carmi. As you all know we have chosen the Make A Wish Foundation as our charity this year. Vicki came up with the idea of raffling off decorated hats to raise extra money for the charity. The ladies especially enjoyed this part of the raffle. Gail Finney and Doug Leithead won the hats and an additional \$25 was raised. I suspect that Doug will have to share his hat with Celine! The 50/50 drawing was won by Bob Davis. He donated his portion to the charity fund for a total of \$40 in the charity. Look forward to more hat raffles at each of the meets this year.

We held a little unofficial business meeting to discuss the up coming meet at Larry and Louise Johnson on July 30th. On Sunday August 6th Louis Ahlen and John Davis will host a tour to the Barker Farm in Ludlow, VT. It was the first farm settled in the North Hill area in 1783. See directions further on in the newsletter. It sounds like great fun. Hope you can all make it. The following weekend will be Stowe.

Several of the club members will be traveling to Mansfield MA for the national MAFCA 2006 meet July 16 thru 22. We will take a lot of pictures for the next newsletter to share with those of you who can't make it.

Happy A ing  
*Paul*

See Us On The Web  
[www.vtmodelaford.org](http://www.vtmodelaford.org)



### A View Down The Road-

**Doug Leithead Activities Chairman**

<b>What</b>	July Activity; See Page 7
<b>When</b>	Sunday, July 30, 2006 11:00 AM
<b>Where</b>	Larry & Louise Johnson's 1129 Lewis Creek Road East Charlotte, VT
<b>Lunch</b>	Pot Luck, bring a dish to share, drinks and settings will be provided
<b>Questions</b>	Call 802-425-2092
<b>Activity</b>	Larry's barn of toys will be open for your viewing pleasure. Then a tour of twelve miles to New Haven, VT where Ralph Farnsworth will show off his collection of antiques.

### A View Down The Road-

**Doug Leithead Activities Chairman**

<b>What</b>	August Activity; See Page 3
<b>When</b>	Sunday, August 6, 2006 11:30 AM
<b>Where</b>	Baker Farm Ludlow, VT
<b>Lunch</b>	Bring a Picnic Lunch
<b>Questions</b>	Louis Ahlen 802-457-2621 Jon Davis 802-763-7636
<b>Directions</b>	<b>Directions:</b> In the center of Ludlow turn north onto Commonwealth Avenue (the only way to turn). Climb a gradual grade until you reach the intersection with Bixby Road (approximately 2½ miles). Proceed through this four corner intersection. Commonwealth Avenue now becomes Barker Road. The Barker Farm is located approximately ½ mile on the left.

## 2006 Activities

Doug Leithead

July 16-22, 2006	2006 MAFCA National Convention	Mansfield, MA
July 30, 2006	GMC Monthly Meet	Charlotte, VT; Larry & Louise Johnson
August 6, 2006	GMC Monthly Meet	Ludlow, VT; Louis Ahlen & Jon Davis
August 6, 2006	23rd International Car Show	Newport, VT
August 11- 13, 2006	49th Stowe Antique & Classic Car Show	Stowe, VT; Sponsored by the VAE & Stowe Area Association
August 25-27, 2006	Moose Festival	Canaan, VT
September date TBA	GMC Monthly Meet and Picnic	South Hero, VT; Dick & Gail Phinney
September 15-17, 2006	40th Bennington Car Show	Bennington, VT
September 23, 2006	Bristol Harvest Festival and Car Show	Bristol, VT; Marguerite Senecal 802-388-7951
October date TBA	GMC Overnight Tour	
October 5-8, 2006	AACA Hershey Car Meet	Hershey, PA
November 12, 2006	GMC Fall Business Meeting	Ferrisburgh, VT; Charlie & Deanna Shapiro
December date TBA	GMC Christmas Party	

## Chapter Flea Market

**Wanted 1930 Model AA truck parts.** I am in the process of looking for parts such as truck running boards, stake bed parts and bed rails. If anyone can help me out with any old truck stuff I would be most appreciated. Steve Halford, 3451 Hartsboro Road, Wallingford, VT 05773, 802-446-2118.

**For sale: Rebuilt distributor** with modern points \$40, Chrome stone guard \$50, Restored "FM" horn \$200, Rebuilt "Crosby-calibrated" Zenith carburetor \$150, Model B cam shaft \$85, 1 restored 19" rim (saffron yellow) with new tire \$100, (4) 21" rims, flat, round and primed \$25 ea, all 4 for \$85, Front motor mount support cushion set \$5, My homemade wheel flatness/roundness gauge free. Call Roger Dean at (802) 496-6469 or send e-mail to Roger@ProposalHelp.com. I can send pictures if you

**For Sale 1930 Model "A" Deluxe Roadster:** Just completed the 2005 Glidden Tour in Altoona, PE, 550 miles. And a 2002 twenty foot enclosed Car Mate Trailer with all necessary connections, it is lined, lights, tie downs, etc. with over \$8000.00 invested. Asking \$32,000.00 for all.



Charles E. Haselton;  
Wilmington,  
NY 518-946-2237

*"Own a Ford ...  
and spend the difference"*

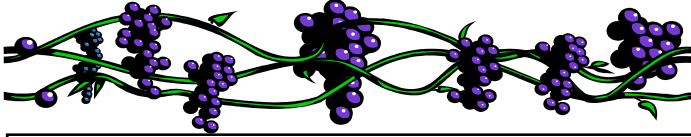
*Henry Ford*

**If you have something for sale, trade or what ever let me know.**

**Peter Crosby**

## *The Grapevine*

The grapevine is news about our fellow members, Please let us know when your birthdays' and anniversaries are so they can be included. Contact Peter Crosby at 802-878-6376.



### **Birthdays**

#### **July Birthdays**

**Frank Mazur July 22**

**Bob Davis July 25**

#### **August Birthdays**

**Helen Horvath August 8**

**Doug Leithead August 26**

#### **Anniversary**

**Paul & Bertha Whittemore July 27  
66 years**

### **Green Mountain Model "A" Barker Farm Meet**

Sunday, August 6, 2006

Barker Farm was the first farm settled in the North Hill area of Ludlow, Vermont, in 1783. Its 200 hundred acres have views of Ascutney to the southeast and Okemo to the west. There are three ponds, a sugar house, and walking paths. Its barn, which was built around 1805, houses numerous equipment. A partial list includes:

1917 Titan tractor  
1918 Aultman-Taylor tractor  
1914 Wildreth Bros. wood splitter  
1925 International. Harvester Truck  
1952 GMC Diesel truck  
1923 Ford Model T touring  
1929 Model A with mowing machine attachment  
1922 Cletrac Crawler  
1927 Fordson Crawler  
1935 Massey Harrison 4 wheel drive  
20 HP International Harvester 1 cylinder stationary engine  
8 cycle engine Aeromotor  
5 HP Abenague Vermont engine

This will be a running board lunch meet. Dessert and soft drinks, tables and chairs will be provided, a tent and barn in case of rain. Plan on arriving 11:30 to 12:30. Lunch at 12:30. An organized tour of the facilities and equipment begins at 1:30. (Please note that other clubs have been invited as well). **Bring Cameras.**

**Directions:** In the center of Ludlow turn north onto Commonwealth Avenue (the only way to turn). Climb a gradual grade until you reach the intersection with Bixby Road (approximately 2½ miles). Proceed through this four corner intersection. Commonwealth Avenue now becomes Barker Road. The Barker Farm is located approximately ½ mile on the left.

Hosts: Louis Ahlen and John Davis  
Tour host and farm owner: Dan Moore  
Dan's phone number: 802-228-5652

*Welcome New  
Members*

*William & Rebecca  
Mattoon  
Chelsea, VT*

## **We are on the Web!**

**Our new domain is [www.vtmodelaford.org](http://www.vtmodelaford.org)  
I will be adding new features to the site for  
the use of our members and prospective  
members. Check often for the latest up-  
dates.**

**Peter Crosby editor/webmaster**

## Seatbelts in a 1931 Slant Windshield Fordor

By Peter Crosby

This Summer I installed seatbelts in my 1931 Slant Window Fordor. There was several options or styles that were available such as lap belts, lap belts with retractors, lap belts with a shoulder belt and the same unit with a retractor. In the front I went with the retractable lap and shoulder belts, in the rear I installed a pair of non-retractable lap belts. The belts were ordered from Seatbelt Pros; they have a user friendly web site that you can select what type of belt and color. <http://www.seatbeltpros.com/>. The front seat arrangement was a challenge because of the enclosed seat frame that is adjustable on a ramp that is bolted to the floor with eight 1/4 inch studs and nuts. The factory mounting I thought was not strong enough to hold itself and two occupants strapped to it in a collision. To be able to utilize the seat frame as partial support I needed to solidly bolt the seat frame to the car body. I never use the seat adjuster as it is all the way back which is comfortable for me also, any movement forward was always hampered by the spare parts and tools stored under the cushion.

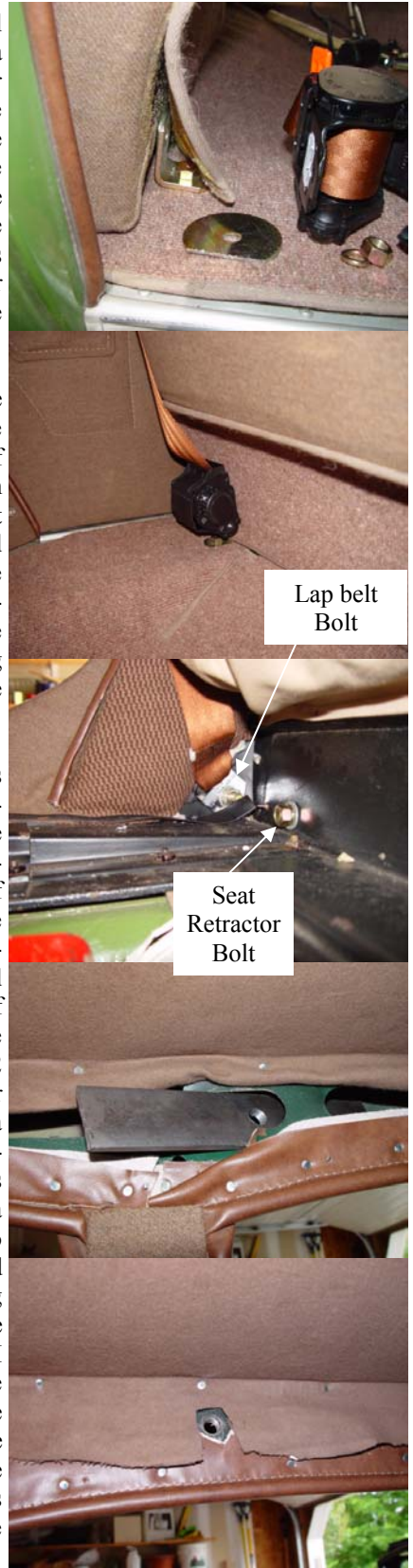
The first step was to bolt the seat down and provide a hold down point for the center lap belts for the front. There were angle brackets that were supplied with the kit and were modified by me by bending them more than ninety degrees. The lower bolt was bolted down through the seat frame and into a body cross member below. A spacer block was added between the floor and the bottom of the seat frame to prevent the frame from being deformed as the bolt was drawn down. A bolt with a large fender washer provided was bolted through the back of the seat frame and hidden behind the trim carpet that was glued to the toe kick area of the seat frame. Then, I just bolted the shorter length lap belt to the angles.



The next step was to deal with retractor which is a floor mount for the shoulder belt. Again I used the angle brackets supplied by the vendor. I drilled through the floor and made holes in the carpet to accommodate the bolts. The seat frame was also drilled for the retractor and corner supports for the seat frame.

The outside end of the shoulder and lap belts were bolted down to the inside of the seat frame in the bottom corners where the seat frame is the strongest and about two inches from the seat retractor with its reinforcement. This allowed the 70 degree angle mounting as recommended by the vendor.

Another mounting that was required offered more challenges. Fortunately the 1931 Slant Windshield Fordor has an all metal body. If the roof side rails were wood construction I probably would not have installed shoulder belts. The roof channel was just wide enough for a 1/4 by 1 1/2 by 8 inch pieces of bar steel. I drilled and taped a 7/16-20 threads for the special shoulder bolt that was supplied. I had to make a cut in the side rail web to insert the steel and drilled the a web for the mounting bolt. I held the bar in place with two pop rivets. Then, I located the hole with the inside trim and mounted the upper shoulder harness. The vendor recommends this be mounted 80 degrees or less from a plum line off the passenger's shoulder.





Above: front view of the upper shoulder mount.

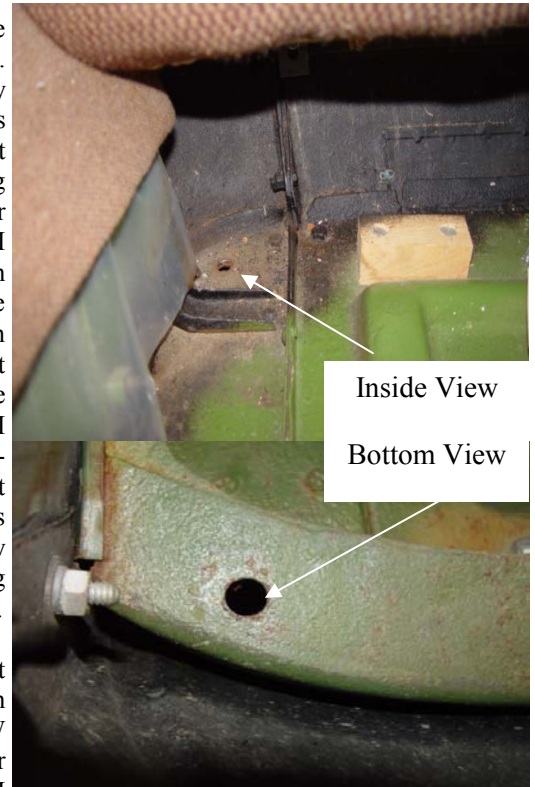
Bottom: There! the front seat belts are installed. This provides a good shot of the retractors and belts in the fully retracted position. There is still ample foot room for egress in the back of the car.



The next challenge was the rear belts. The rears I only installed lap belts because there is not a good mounting place near the rear window that I could come up with that would have been strong enough and in the right position behind the occupants. Also I did not get retractors for the belt because there was not any possibility of the belts getting caught in the doors.

The strongest mounting place in the rear of the SW Fordor is the rear cross member. I drilled four 7/16 inch holes through it. I purchased four 7/16 by 3 inch bolts for the lap belt tie downs. This location gave me about 70 degrees angle necessary for a comfortable fit. I had to do it all over again I could have purchased 75 inch belts for the rear not the 60 inch I installed, they do work fine but if someone is a several inches wider around the middle there will be no adjustment left.

The entire seat belt kit cost about \$240.00 with some extra bolts and steel that I had to purchase. The belts are very comfortable and look good with the matching brown color. The buckles are chrome plated not plastic so they do look a little 60's vintage anyway.



## AUCTION WATCH

Peter Crosby



Above: is a very rare Zenith 3 carburetor This one is a 1928 to early 1931 type it has the reinforcing built into the casting where it mounts to the manifold. The castings of the Zenith 3 made by Ford were thinner than the Zenith and Holly built units. This un-restored unit sold on eBay for \$535.00.

Below: is a new old stock drivers side 30-31Tudor and Pickup door. It is in beautiful mint condition it sold for \$1076.00.



## Treasurer's Report

Dick Phinney

**Ending Balance-checking..... \$913.89**

**Ending Balance-savings ..... \$1621.57**

**Charity Fund..... \$40.00**

07/01/06

## *You should know...*

**That the club has a number of video tapes for members use. Contact: Charlie Shapiro; 802-877-8332 or email at-shellmt@together.net**

**Video Tapes:** Carbs and Carbos; Dial D for Distributor; Gen'nin' Along with Lloyd & Floyd; Henry Ford Biography; How to Avoid Fahrenheit Fright; How to Stop on a Dime; Model A Horns.

**Books:***Model A Ford Mechanics Handbook (we have 2 copies of this)*

## *You also Should Know...*

The very latest Club Roster with all of the up-to-date revisions is always available by just be emailing me or Bonnie at peter.crosby@verizon.net. Along with the Roster I also have available our Club's, M.A.F.C.A's and M.A.R.C's applications and also a copy of our club bylaws.

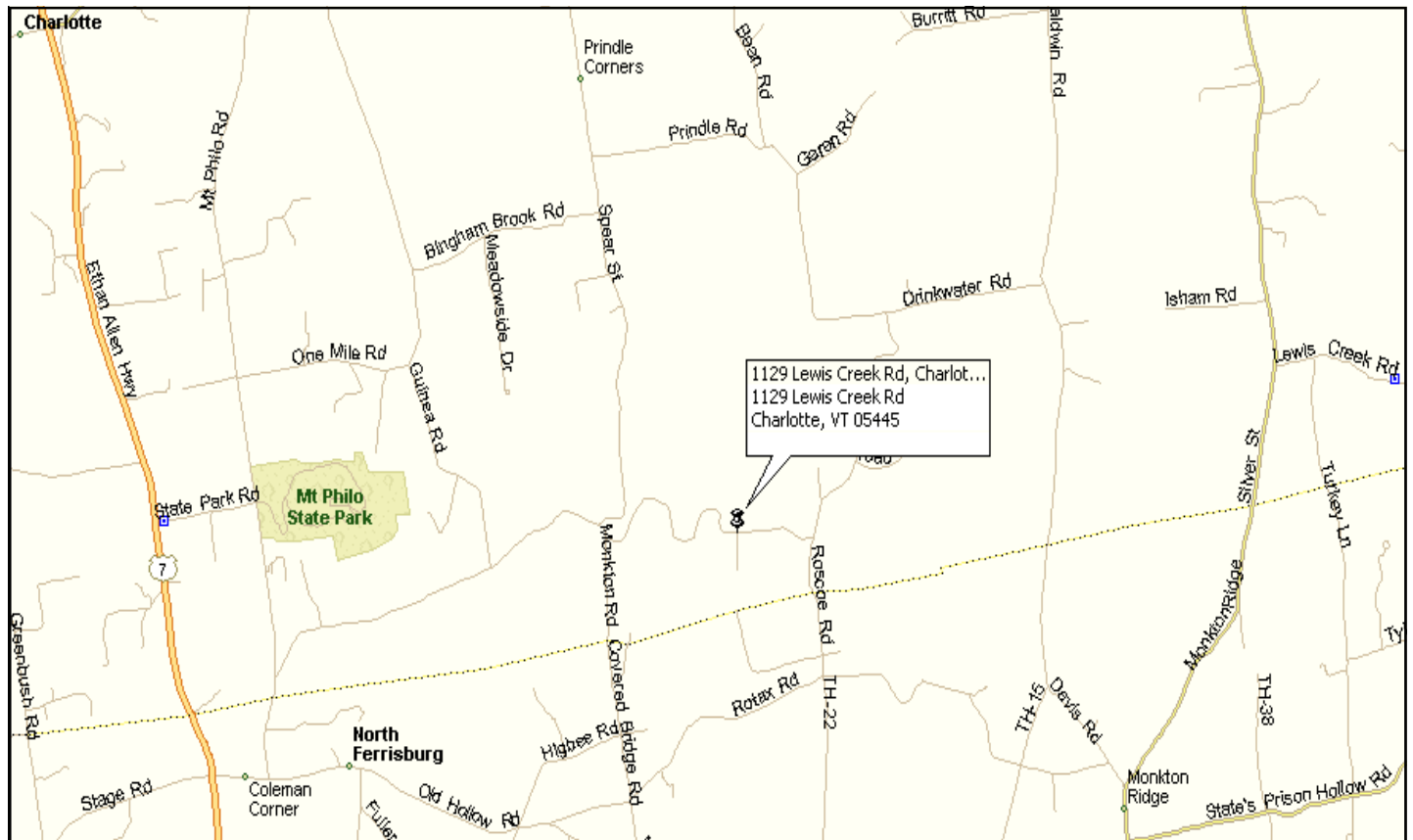
Peter Crosby



## Blowing My Horn...

Peter Crosby, Editor

This Newsletter is always posted on our website. It will be posted as soon as it is finished. Last month for example it was posted a full week before you received it in the US Mail. This time because of the July Fourth holiday and my schedule the newsletter will again be posted a full week before you get yours in the mail. Another benefit of the website is that full color photos that just do not seem to photocopy that well can be seen with greater detail. Check out the website Frequently Asked Questions Section, if you have a question that you would like to see posted or answered let me know I will give you credit.



## Club Officers

**President**-Paul Boozan 1364 Stebbins Rd.; Jeffersonville, VT 05464; Phone 802-644-5688; peaches01@verizon.net

**Vice President**-Douglas Leithead; 1856 Darling Hill Road; Newport, VT 05855 Phone 802-334-2584

**Treasurer**-Dick Phinney; 66 Featherbed Lane; South Hero, VT 05486; Phone 802-372-5230; gphinney@comcast.com

**Secretary**- Bonnie Chase; 7 Sycamore Lane; Essex Junction, VT 05452 Phone 802-878-6376; bonniec@neci.edu

**Region Director**-Rod Dolliver; 430 Dolliver Rd.; Charlotte, VT 05445 Phone 802-425-2745; rcdbjd46@aol.com

**Newsletter, Webmaster**-Peter Crosby; 7 Sycamore Lane; Essex Junction, VT 05452 Phone 802-878-6376; peter.crosby@verizon.net

## *Chapter Flea Market*

- ◆ Send description of items for the Flea Market to Peter Crosby via mail or Email to peter.crosby@verizon.net.
- ◆ Items should be described For Sale, trade, wanted, or take it away.
- ◆ For sale items must be listed with asking price.
- ◆ Flea market is open to all members free of charge for auto and fashion related items only. Items to be re-listed must be resubmitted each month.
- ◆ Deadline is the 25th of the month for publication in the following month's issue.



## **MAPLE "A" NEWS**

Green Mountain Region / Chapter  
MARC / MAFCA Inc.  
Peter Crosby, Editor  
7 Sycamore Lane  
Essex Junction, VT 05452